



Lifting your dreams

**SELF LOADER**

# TM-ZE550SLH

For Large Size Vehicles

# CARGO CRANE





# LIFT

# LOAD & CARRY

## TM-ZE550SLH

### Three-in-one multi-worker truck



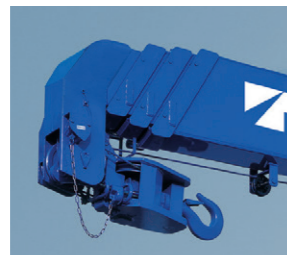
**LIFT** Performs standard cargo crane operations. Reliable, on-site performance that combines strength with stability.

**LOAD & CARRY** Truck can be tilted on a long jack to load construction materials, heavy machinery and other items into the truck bed for transport. Also equipped with a winch to load non-mobile items, offering powerful support for truck operators.



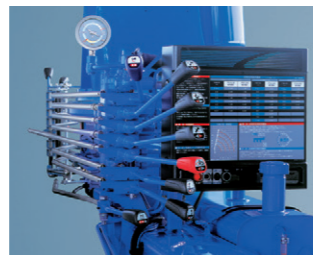
#### Hook-In System

TM-ZE550 features the "Hook-in" system to further enhance work efficiency. A pull of a lever, the crane hook is stowed automatically. No more manual fixing.



#### Responding to Operator's Command

Equipped with an optimally matched, high-performance control valve, the operating levers provide improved responsiveness and fine-tuned control. Operation is fast or slow in accordance with operator's command. The rods between left and right operation levers are provided in stainless steel as standard.



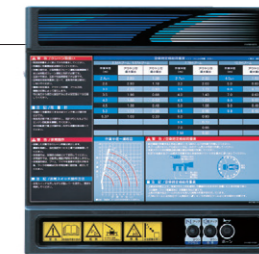
Control lever

#### Centralized Control Panels

Installed on both sides of the crane frame are the centralized control panels, where operating switches and the lifting charts needed for crane operation are grouped together and arranged on single panels.



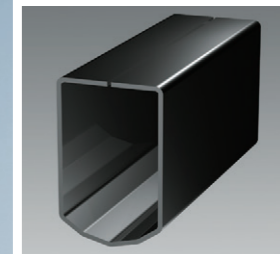
Left-hand side



Right-hand side

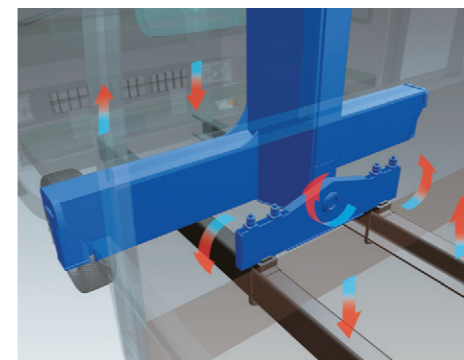
#### Heptagonal Boom

Tadano's unique heptagonal boom is made of high-tensile steel. The boom is of a structure of one piece of steel plate for lower boom weight and powerful lifting capacity. Special valves enable smooth boom extension and retraction for a smoother operation to reduce a shock when telescoping the boom. The cables and sheaves are all internal – for a clean, clutter-free appearance.



#### Three-Point Support System (Equalizer Crane Support)

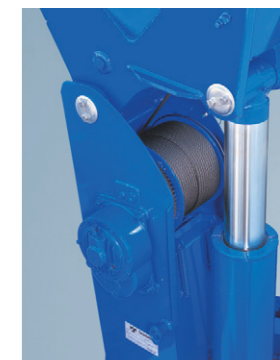
The equalizer crane support system protects the chassis frame by evenly distributing the load applied to the frame during vehicle traveling to prevent excessive stress from concentrating at any one point.



#### Strong Winch

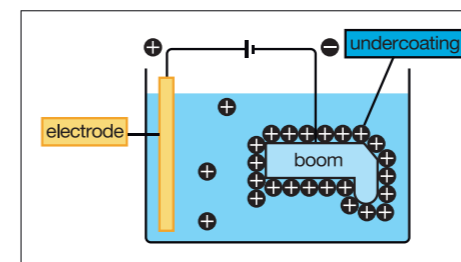
The advantages of the enlarged winch drum and plunger motor are evident during start-up when maximum power is required. Re-hoisting with a load on the hook can also be handled with ease.

The winch reduction gear comes equipped with a failsafe automatic brake. From the pitch of the drum grooves to the fitting of the guide sheave, cable winding has been improved in every detail so as to prevent the cable from winding off position.



#### Cationic Electro-Deposition Coating

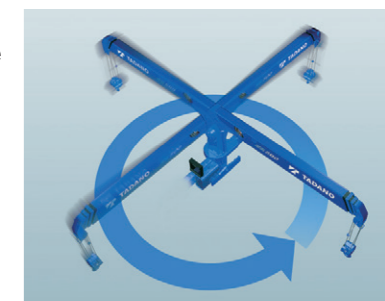
The undercoating of the crane is done by Cationic electro-deposition coating. This process involves soaking of each material, even the narrowest inner booms, and frames, and they are thoroughly undercoated.



#### Full Circle, Continuous Slewing

Compact slewing post improves performance providing Full circle, continuous rotation for more efficient operations.

Automatic slewing lock: The boom is mechanically locked at the slewing post base which prevents boom rotation during vehicle travel.





# TM-ZE550SLH series

## Technical Specifications

MODEL	TM-ZE553SLH	TM-ZE554SLH	TM-ZE555SLH
CRANE CAPACITY	5,050 kg at 2.5 m (5parts of line)		
BOOM	Fully hydraulic telescoping boom of heptagonal box construction	Fully powered partly synchronized telescoping boom of heptagonal box construction	
Sections	3	4	5
Length	3.47 m – 8.31 m	3.55 m – 10.8 m	3.77 m – 13.34 m
Extending speed	4.84 m / 18 s	7.25 m / 21 s	9.57 m / 25 s
Elevating range/Speed		1° to 78° / 12 s	
Max. lifting height*	Approx. 10.3 m*	Approx. 12.7 m*	Approx. 15.2 m*
Max. load radius*	8.09 m*	10.58 m*	13.12 m*
WINCH	Hydraulic motor driven. Spur gear speed reduction, provided with mechanical brake.		
Max. single line pull	9.90 kN {1,010 kgf}		
Max. single line speed	66 m/min. (at 4th layer)		
Wire rope (Diameter x length)	8 mm x 67 m	8 mm x 82 m	8 mm x 97 m
HOOK STOWING DEVICE	Mechanically stows hook beneath boom head.		
SLEWING	Hydraulic motor driven. Worm gear speed reduction. Continuous 360° full circle slewing on ball bearing slew ring. Automatic slewing lock.		
Slewing speed	2.5 min <sup>-1</sup> {rpm}		
OUTRIGGERS	Hydraulically extended sliders and hydraulically extended jacks. Integral with crane frame.		
Extension width	Max.: 3.4 m, Mid.: 2.65 m, Min.: 2.17 m		
HYDRAULIC SYSTEM	Multiple control valves with integral safety valves.		
Control valves			
STANDARD SAFETY EQUIPMENT	•Load meter •Load indicator •Over-winding alarm •Anti-two-block device •Hook safety latch •Hydraulic safety valves, check valves and holding valves •Level gauge •Outrigger float lowering preventer •Outrigger extension coordinator for leveling		
SUITABLE TRUCKS	Gross vehicle mass (including crane mass) 15,000 to 25,000 kg		

### Notes for Technical Specifications:

Operating speeds of the crane are guaranteed under the condition that the pump delivery is 60 L/min.

\* Boom deflection, and subsequent radius and boom angle change must be accounted for when applying load to hook.

## Option



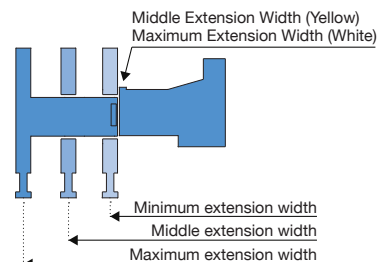
### Loader winch

Used for loading or unloading of vehicles.

Capacity: 78.5 kN {8,000 kgf} (2 parts of line)

98.1 kN {10,000 kgf} (3 parts of line)

## Extension Mark



## Rated Lifting Capacities (With empty chassis)

### Table A

#### TM-ZE553SLH

• 3.47 m boom

Load radius (m)	2.5 and below	2.8	3.25
Rated lifting capacity (kg)	5,050	4,050	3,280

• 5.91 m boom

Load radius (m)	2.6 and below	2.8	3.3	3.6	4.1	4.5	5.0	5.5	5.69
Rated lifting capacity (kg)	4,050	4,050	3,180	2,780	2,180	1,880	1,580	1,330	1,280

• 8.31 m boom

Load radius (m)	2.6 and below	3.4	3.8	4.1	4.5	5.0	5.5	6.0	6.5	7.0	7.5	8.09
Rated lifting capacity (kg)	3,130	3,080	2,530	2,180	1,880	1,580	1,330	1,180	1,080	980	880	780

#### TM-ZE554SLH

• 3.55 m boom

Load radius (m)	2.5 and below	2.8	3.33
Rated lifting capacity (kg)	5,050	4,050	3,150

• 5.99 m boom

Load radius (m)	2.6 and below	2.8	3.6	4.0	4.5	5.0	5.77
Rated lifting capacity (kg)	4,050	4,050	2,730	2,130	1,830	1,530	1,230

• 8.39 m boom

Load radius (m)	2.6 and below	3.0	3.6	4.0	4.5	5.0	5.5	6.0	6.5	7.0	7.5	8.17
Rated lifting capacity (kg)	3,130	3,130	2,730	2,130	1,830	1,530	1,330	1,130	1,080	930	830	730

• 10.8 m boom

Load radius (m)	3.5 and below	4.0	4.5	5.0	6.0	7.0	8.0	9.0	10.0	10.58
Rated lifting capacity (kg)	2,130	2,130	1,830	1,530	1,130	930	730	630	530	480

### Table B

#### TM-ZE553SLH

• 3.47 m boom

Load radius (m)	2.5 and below	2.95	3.25
Rated lifting capacity (kg)	5,050	4,050	3,650

• 5.91 m boom

Load radius (m)	2.6 and below	2.95	3.5	4.1	4.5	5.0	5.5	5.69
Rated lifting capacity (kg)	4,050	4,050	3,330	2,650	2,230	1,930	1,630	1,580

• 8.31 m boom

Load radius (m)	2.6 and below	3.5	3.8	4.1	4.5	5.0	5.5	6.0	6.5	7.0	7.5	8.09
Rated lifting capacity (kg)	3,130	3,130	2,980	2,650	2,230	1,930	1,630	1,480	1,330	1,180	1,080	930

#### TM-ZE554SLH

• 3.55 m boom

Load radius (m)	2.5 and below	2.9	3.33
Rated lifting capacity (kg)	5,050	4,050	3,550

• 5.99 m boom

Load radius (m)	2.3 and below	2.9	3.7	4.0	4.5	5.0	5.77
Rated lifting capacity (kg)	4,050	4,050	3,130	2,680	2,230	1,880	1,480

• 8.39 m boom

Load radius (m)	2.3 and below	3.0	3.7	4.0	4.5	5.0	5.5	6.0	6.5	7.0	7.5	8.17
Rated lifting capacity (kg)	3,130	3,130	2,930	2,680	2,230	1,880	1,580	1,430	1,280	1,130	1,030	880

• 10.8 m boom

Load radius (m)	3.5 and below	4.0	4.5	5.0	6.0	7.0	8.0	9.0	10.0	10.58
Rated lifting capacity (kg)	2,130	2,130	2,130	1,780	1,380	1,130	900	780	680	630

### Table D

#### TM-ZE553SLH

• 3.47 m boom

Load radius (m)	2.5 and below	2.95	3.25
Rated lifting capacity (kg)	5,050	4,050	3,700

• 5.91 m boom

Load radius (m)	2.6 and below	2.95	3.8	4.1	4.5	5.0	5.5	5.69
Rated lifting capacity (kg)	4,050	4,050	3,130	2,930	2,630	2,380	2,180	2,080

• 8.31 m boom

Load radius (m)	2.6 and below	3.0	3.8	4.1	4.5	5.0	5.5	6.0	6.5	7.0	7.5	8.09
Rated lifting capacity (kg)	3,130	3,130	3,130	2,930	2,630	2,380	2,180	1,980	1,830	1,680	1,530	1,430

#### TM-ZE554SLH

• 3.55 m boom

Load radius (m)	2.5 and below	2.9	3.33
Rated lifting capacity (kg)	5,050	4,050	3,550

• 5.99 m boom

Load radius (m)	2.5 and below	2.9	3.7	4.0	4.5	5.0	5.77
Rated lifting capacity (kg)	4,050	4,050	3,130	2,930	2,580	2,330	2,030

• 8.39 m boom

Load radius (m)	2.5 and below	3.0	3.7	4.0	4.5	5.0	5.5	6.0	6.5	7.0	7.5	8.17
Rated lifting capacity (kg)	3,130	3,130	3,130	2,930	2,580	2,330	2,080	1,930	1,780	1,630	1,480	1,380

• 10.8 m boom

Load radius (m)	3.5 and below	4.5	5.0	6.0	7.0	8.0	9.0	10.0	10.58
Rated lifting capacity (kg)	2,130	2,130	2,030	1,780	1,530	1,380	1,200	1,050	1,000

### Notes for Rated Lifting Capacities:

- Empty Chassis Rated Capacities in these tables depend on condition that crane is set level on firm level ground.
- The mass of hook block (45 kg) slings and all similarly used load lifting devices must be added to the mass of the load.
- For boom lengths not shown, use the rated lifting capacity of next longer boom.
- Empty Chassis Rated Capacities table A, B, and D depend on the types of chassis.
- Empty Chassis Rated Capacities are shown for over-side areas and over-rear area. These capacities for over-front area may lowered depending on the types of chassis.
- Never operate the crane and set up the outriggers, if the carrier inclines.

#### TM-ZE555SLH

• 3.77 m boom

Load radius (m)	2.5 and below	2.8	3.55
Rated lifting capacity (kg)	5,050	4,050	2,830

• 6.21 m boom

Load radius (m)	2.6 and below	2.8	3.6	3.9	4.5	5.0	5.5	5.99
Rated lifting capacity (kg)	4,050	4,050	2,730	2,180	1,730	1,480	1,280	1,080

• 8.59 m boom

Load radius (m)	2.6 and below	3.4	3.6	3.9	4.5	5.0	5.5	6.0	6.5	7.0	7.5	8.37
Rated lifting capacity (kg)	3,130	3,030	2,730	2,180	1,730	1,480	1,280	1,080	980	830	730	600

• 10.97 m boom

Load radius (m)	4.0 and below	4.5	5.0	6.0	7.0	8.0	9.0	10.0	10.75
Rated lifting capacity (kg)	2,080	1,730	1,480	1,080	830	630	550	480	430

• 13.34 m boom

Load radius (m)	5.0 and below	6.0	7.0	8.0	9.0	10.0	11.0	12.0	13.12
Rated lifting capacity (kg)	1,430	1,080	830	630	550	480	400	380	300

#### TM-ZE555SLH

• 3.77 m boom

Load radius (m)	2.5 and below	2.8	3.55
Rated lifting capacity (kg)	5,050	4,050	3,150

• 6.21 m boom

Load radius (m)	2.5 and below	2.8	3.6	3.9	4.5	5.0	5.5	5.99
Rated lifting capacity (kg)	4,050	4,050	3,130	2,730	2,130	1,780	1,530	1,350

• 8.59 m boom

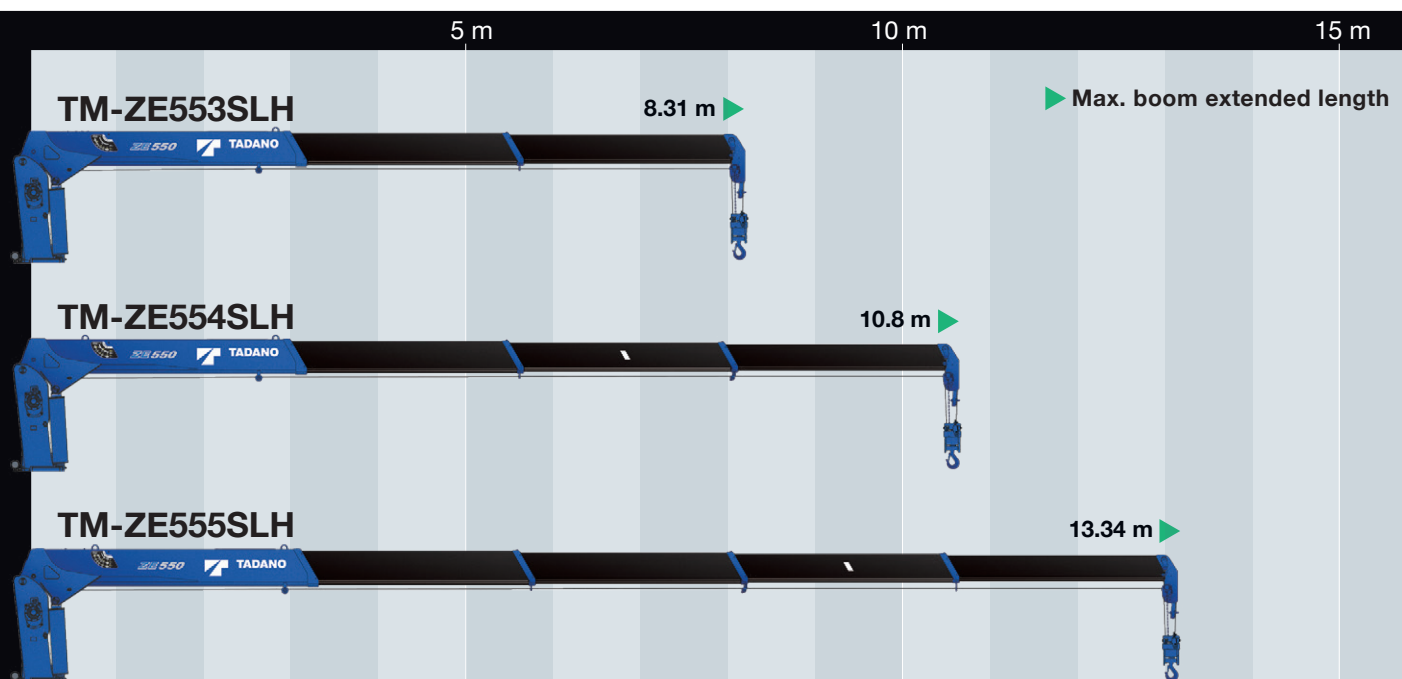
Load radius (m)	2.5 and below	3.0	3.6	3.9	4.5	5.0	5.5	6.0	6.5	7.0	7.5	8.37
Rated lifting capacity (kg)	3,130	3,130	3,130	2,730	2,130	1,780	1,530	1,280	1,180	1,030	930	780

• 10.97 m boom

Load radius (m)	4.0 and below	4.5	5.0	6.0	7.0	8.0	9.0	10.0	10.75
Rated lifting capacity (kg)	2,230	2,130	1,780	1,280	1,030	780	730	630	550

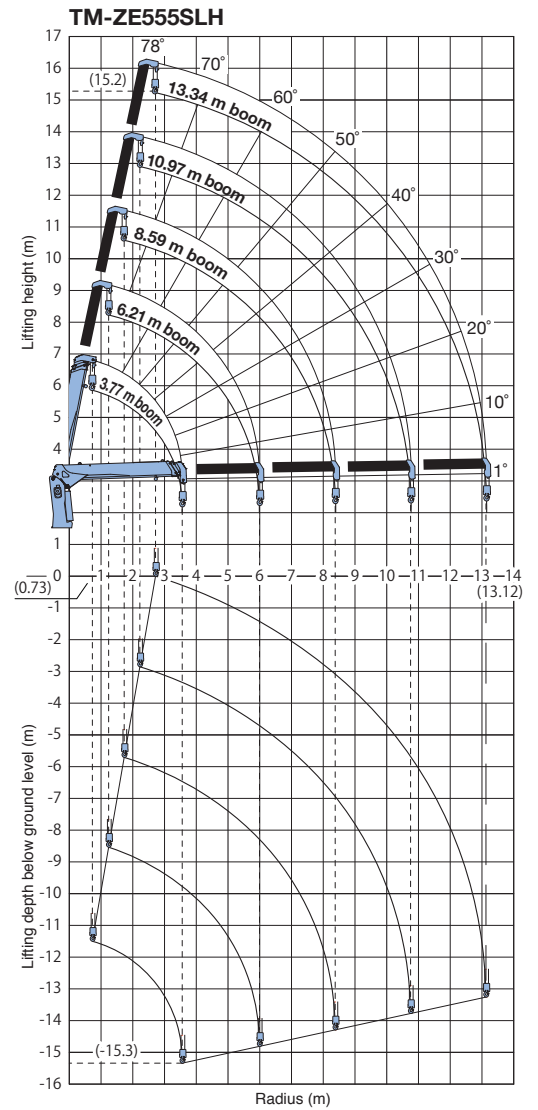
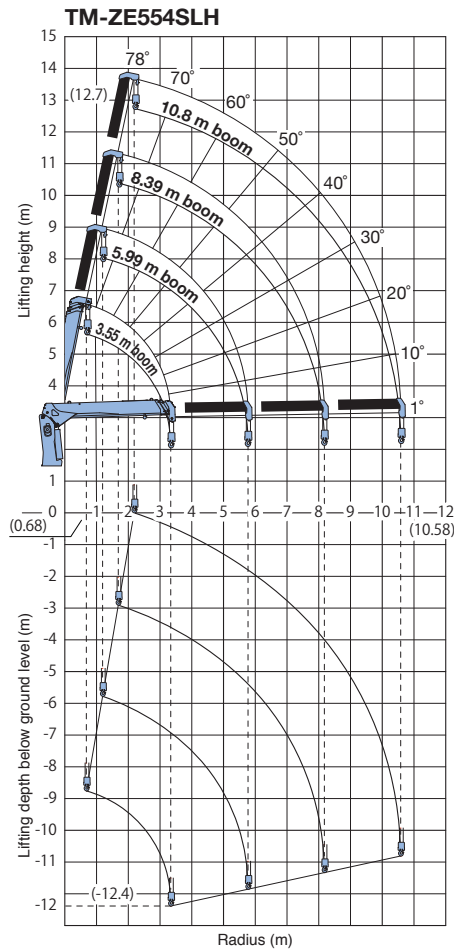
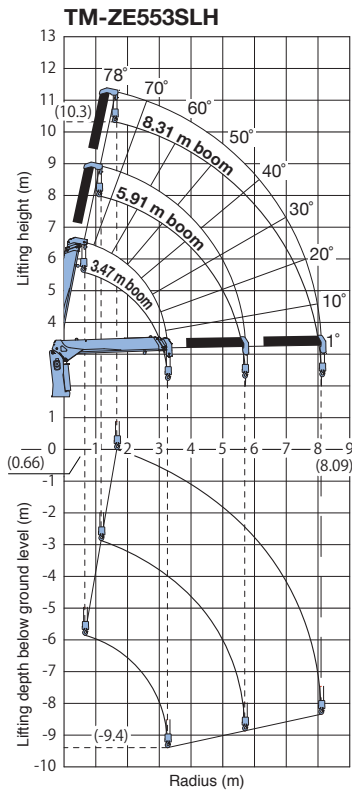
• 13.34 m boom

Load radius (m)	5.0 and below	6.0	7.0	8.0	9.0	10.0	11.0	12.0	13.12
Rated lifting capacity (kg)	1,430	1,280	1,030	780	730	630	500	480	400



Note: The cables and sheaves are all internal – for a clean, clutter-free appearance.

# Working Range



**Notes for Working Range:**

The above lifting heights and boom angles are based on a straight (unladen) boom, and allowance should be made for boom deflection obtained under laden conditions.

NOTE: Some specifications are subject to change.



**TADANO LTD.** (International Sales Division)  
 4-12, Kamezawa 2-chome, Sumida-ku Tokyo 130-0014, Japan  
 Phone: +81-3-3621-7750 Fax: +81-3-3621-7785  
 www.tadano.com/ E-mail: info@tadano.com

