

TM-ZE360/300

For Medium Size Vehicles



IDEAL Cargo Crane, TADANO ZE

The ZE features all the Tadano Cargo Crane technologies that are recognized the world over.

The key development concepts remain:

EXCELLENT QUALITY,
EASY OPERATION AND EASY MAINTENANCE.

The TM-ZE360/300 series, with a lifting capacity of 3.03 tons, and a choice of 4 different lengths of the boom are available to meet your lifting requirements.

CENTRALIZED CONTROL PANELS

Installed on both sides of the slewing post are the centralized control panels where operating switches and the lifting charts needed for crane operation are grouped together and arranged on a single panel.



LEFT-HAND SIDE

RIGHT-HAND SIDE

RESPONDING TO OPERATOR'S COMMAND

Equipped with optimally matched, high-performance control valves, the operating levers provide improved responsiveness and fine-tuned control. Operation is fast or slow in accordance with operator's command. The stainless rods between the left and right operation levers are provided as standard.



LOAD METER

QUICKER WORK WITH ADVANCED OUTRIGGER MECHANISM

The outrigger beams can be easily operated, using a grip to lock/release and extend/retract them.

The new lock system prevents the outrigger from extending during traveling.

A level gauge is provided as standard equipment.



NEW LOCK SYSTEM



LEVEL GAUGE



TM-ZE360 series

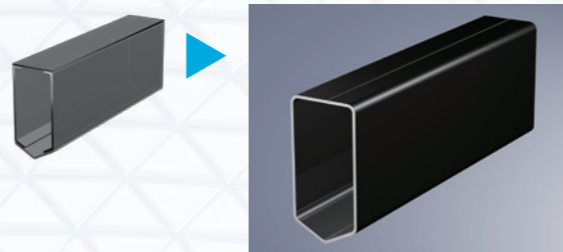


TM-ZE300 series

STRONGER AND LIGHTER BOOM

Tadano's unique pentagonal boom is made of high-tensile steel and the section of boom has a structure of bended one piece steel plate for lighter boom weight and powerful lifting capability.

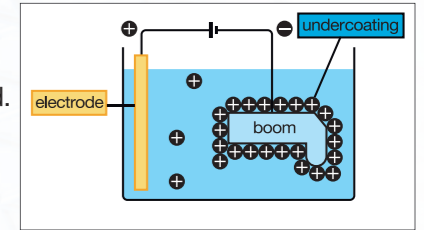
Special valves enable smooth boom extension and retraction for smoother operation to reduce a shock when telescoping the boom.



CATIONIC ELECTRO-DEPOSITION COATING

The crane is undercoated by Cationic Electro-deposition method.

The parts are dipped in cationic solution, and even the narrow inner booms and frames are thoroughly undercoated.



STRONGER WINCH

The advantages of the enlarged winch drum and plunger motor are evident during start-up when maximum power is required. Re-hoisting with a load on the hook can also be handled with ease.

The winch reduction gear comes equipped with a failsafe automatic brake.

From the pitch of the drum grooves to the fitting of the guide sheave, cable winding has been improved in every detail so as to prevent the cable from winding off position.

FULL CIRCLE, CONTINUOUS SLEWING

The newly designed compact slewing post improves performance providing FULL CIRCLE, continuous rotation for more efficient operations.

AUTOMATIC SLEWING LOCK:

The boom is mechanically locked at the slewing post base which prevents boom rotation during traveling.



THREE-POINT SUPPORT SYSTEM (Equalizer Crane Support)

Tadano's Equalizer Crane Support protects the truck frame from stress.

The crane is mounted to the truck chassis with the Equalizer Crane Support that evenly distributes the load to prevent excessive stress concentration at any one point.

